

Toowong Central

Deserved inner city public space

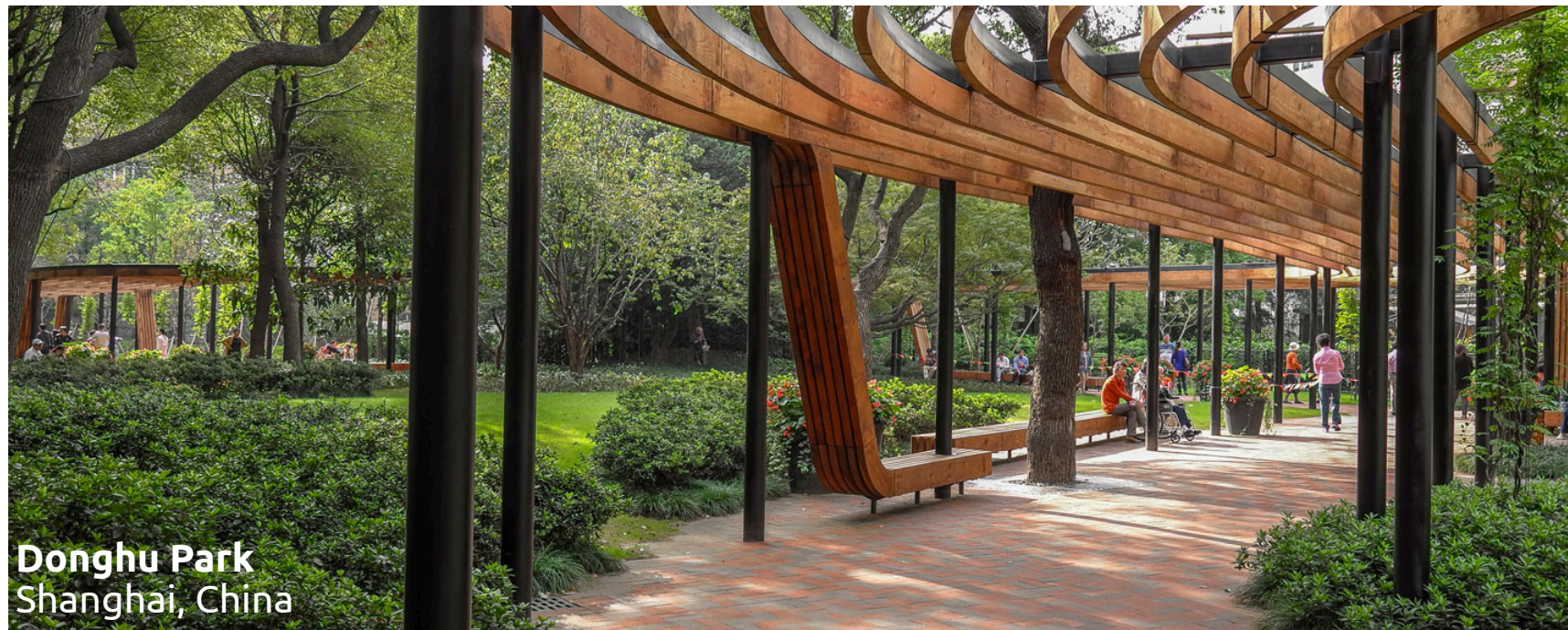
Growing pains

Surrounded by dense, multi-residential dwellings and significant retail, there is a clear and pressing need for more open green space in Toowong. With further residential apartment towers under construction on Coronation Drive, **there must be an appropriate increase in green space.**

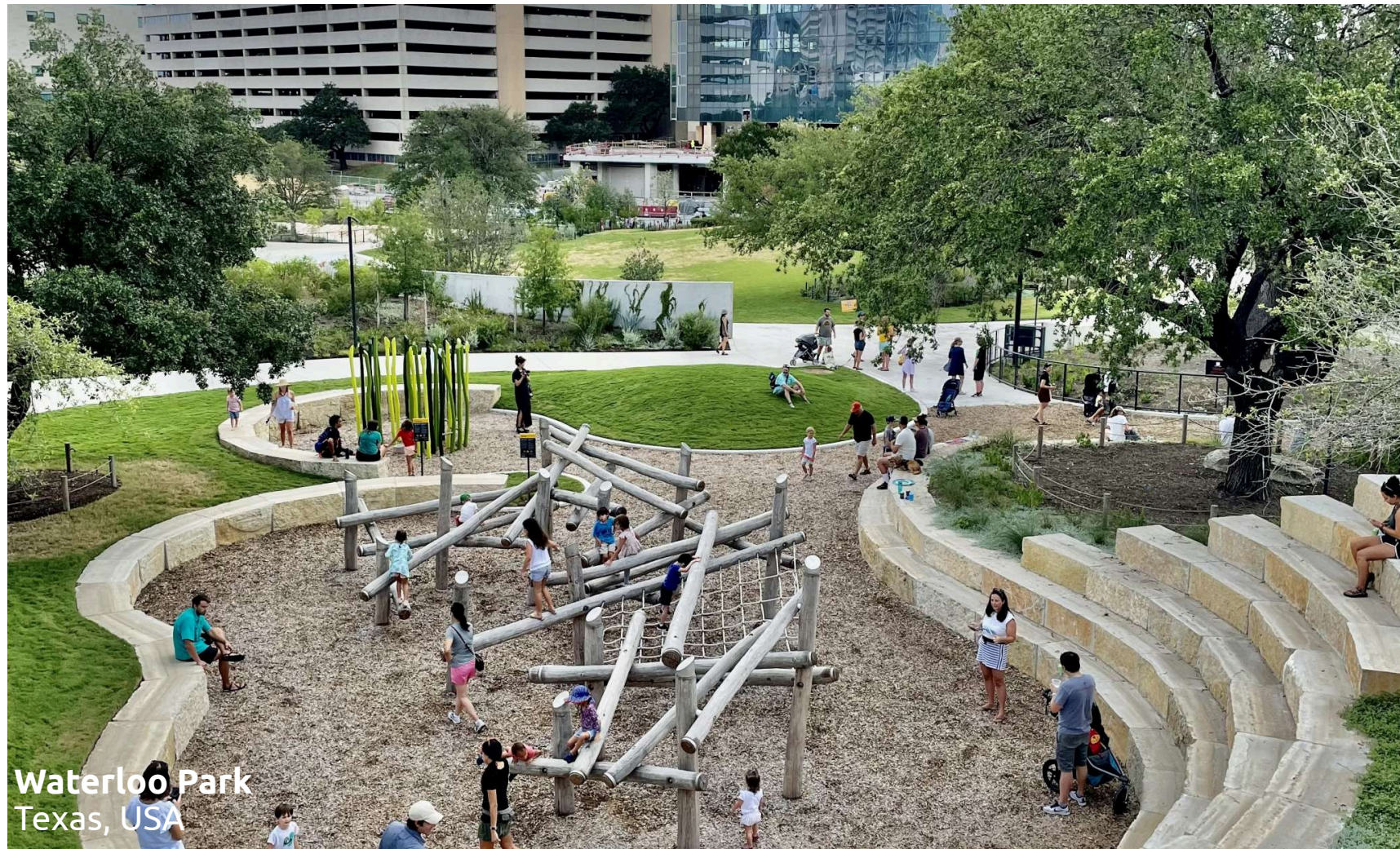


woefully inadequate





Donghu Park
Shanghai, China



Waterloo Park
Texas, USA



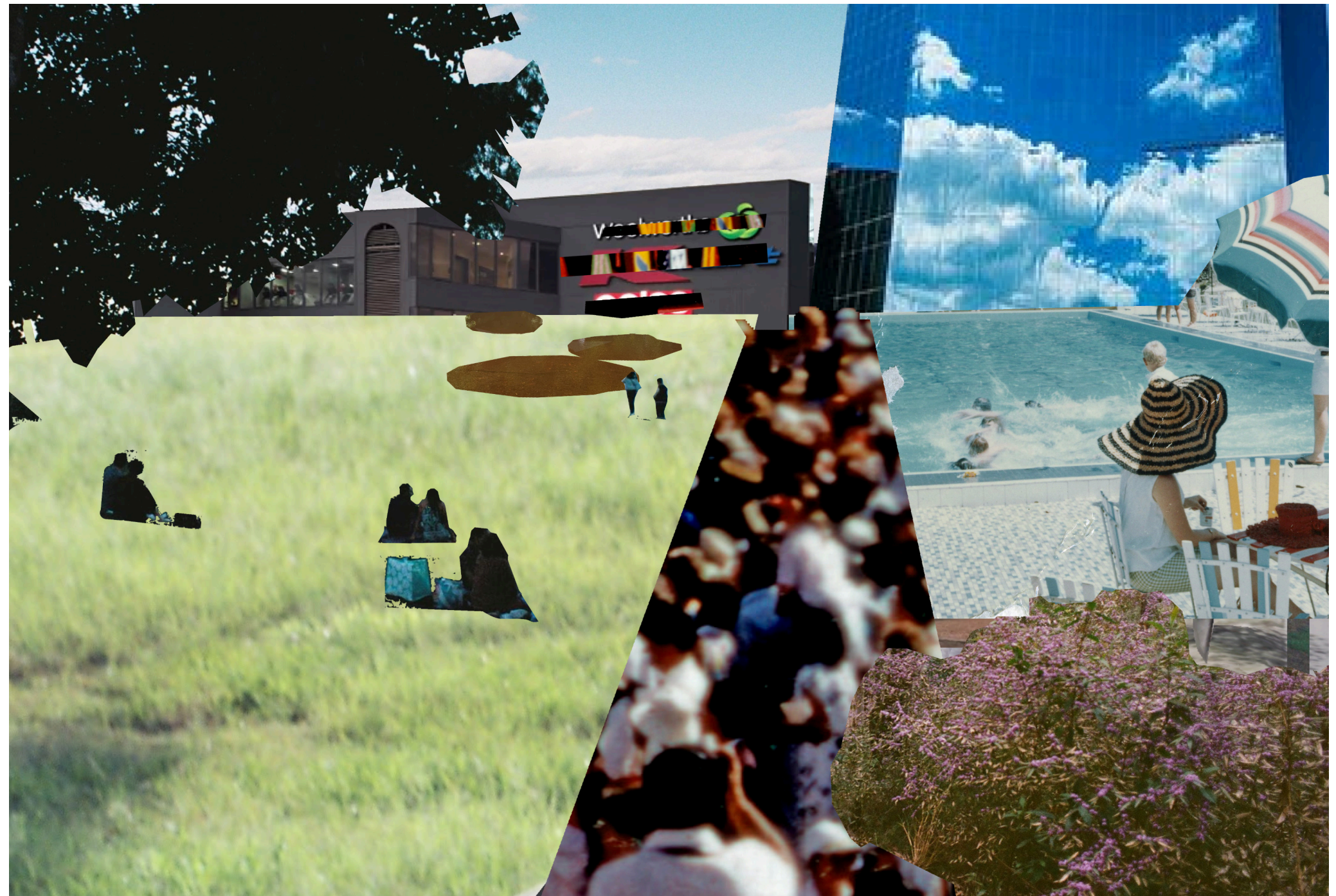
Teardrop Park
NYC, USA

**It's been
done before**

Much denser and more populated cities around the world recognise the importance of greenspace as the urban environment expands. Brisbane's subtropical climate demands outdoor spaces that

The solution

A vegetative wall, the noise of nearby cars drowned by joyous splashing of a new public swimming pool. Gathered on the lawn, groups of friends will lazily cast eyes towards the bustling shops as they stretch out in the afternoon sun, breaking employees and shoppers finding a tranquil moment perched on the edge of raised ponds.

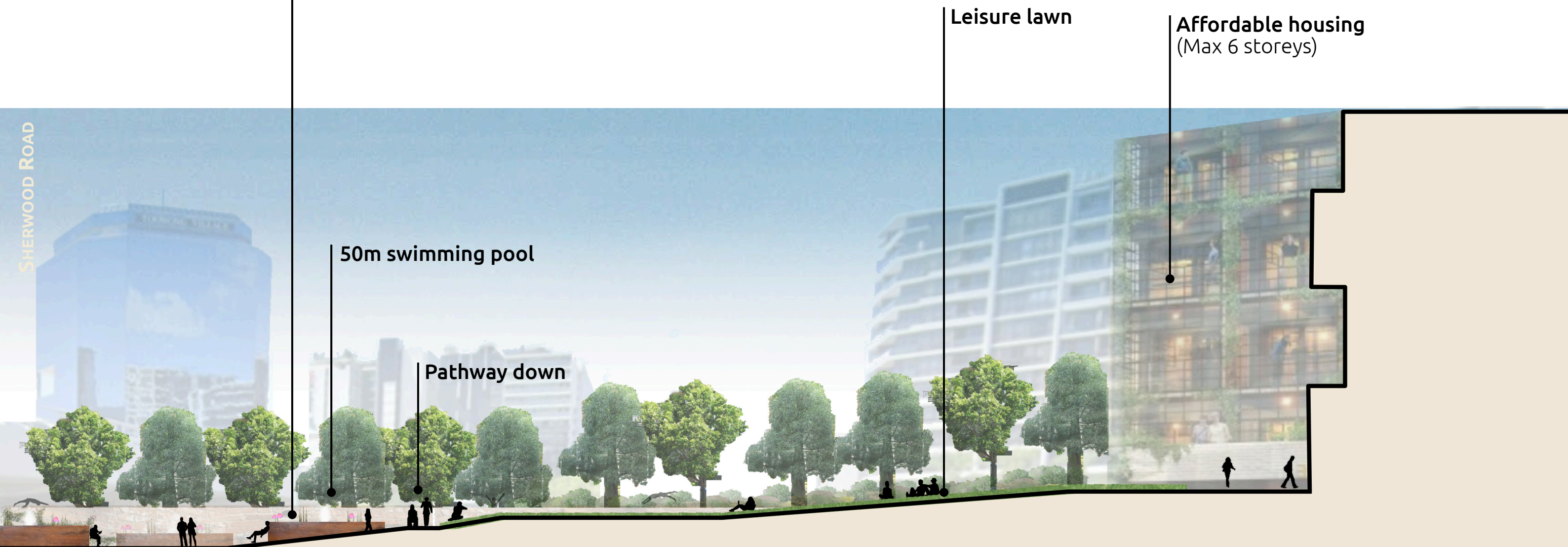


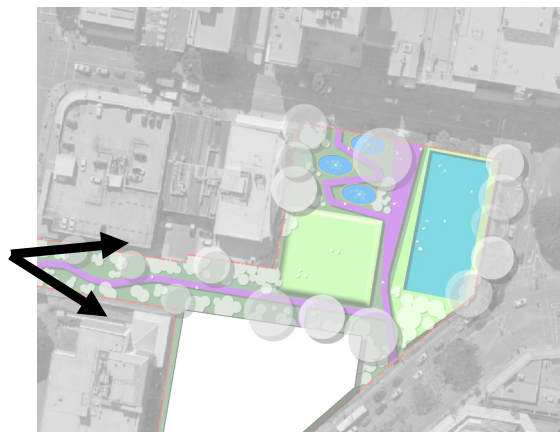


1 50m swimming pool 2 flowering midstory meadow 3 open leisure lawn 4 planted ponds 5 shaded access walkway 6 affordable housing



The natural grade of the site creates a gently sloping open lawn whilst a collection of ponds form like puddles on the lower portion. An open swimming pool and significant trees will screen the roadside and provide a foreground to the buildings beyond.





VIEW LOOKING TOWARDS PARK FROM JEPHSON STREET

Key plants

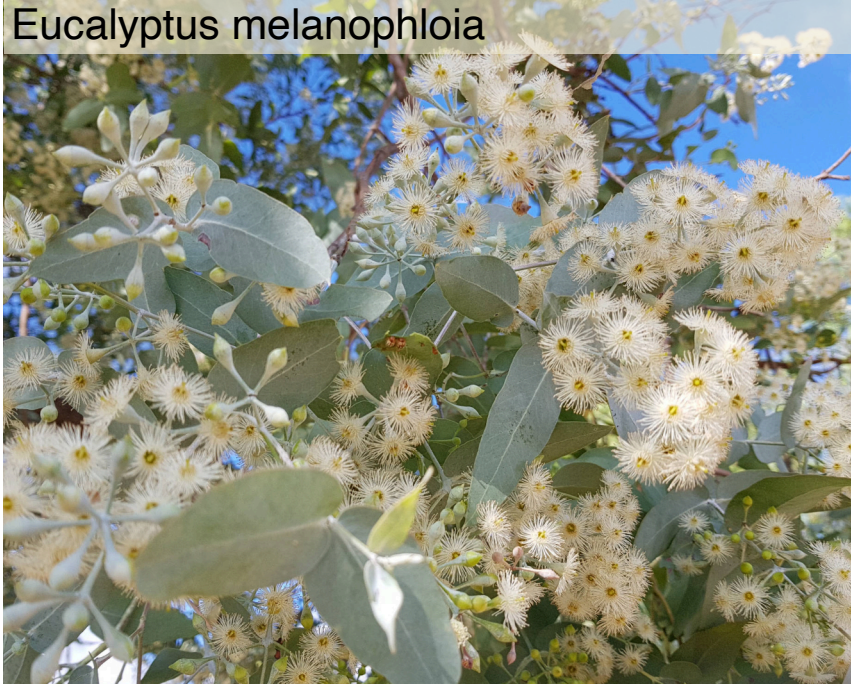
All native, all flowering, the key plants are a mix of local and regional natives that once inhabited the area.



Baeckea linifolia



Pultenaea villosa



Eucalyptus melanophloia



Brachychiton rupestris



Ozothamnus diosmifolius



Banksia robur

trees

- Brachychiton rupestris*- queensland bottle tree
- Corymbia tessellaris* - moreton bay ash
- Eucalyptus melanophloia* - silver leafed ironbark

shrubs

- Banksia robur* - swamp banksia
- Baeckea linifolia* - weeping baeckea
- Pultenaea villosa* - hairy bush pea
- Ozothamnus diosmifolius* - rice flower

groundcover/vines

- Hardenbergia violacea* - purple coral pea
- Chrysocephalum apiculatum* - yellow buttons
- Pararistolochia praevenosa* - birdwing butterfly vine



A swimming pool, gum trees, open lawn
and running water- give Toowong the
Australian backyard it deserves.

LinkedIn
Reed Peters

Instagram
reedpictures_

Toowong Central